

Training Classroom Requirements



In this document, requirements to the classroom and lab hardware are described for the proper training process organization.

Infinet Wireless Training Classroom Requirements

Trainer Equipment

- Trainer Laptop (for theoretical and practical exercises).
- At least one outlet near the table (or power strip).

Trainees Equipment

- Laptop (provided by Trainees).
- At least one outlet near the table of each participant (or power strip).

Common Requirements

- Internet access.
- Projector and Projector Screen (or equivalent large-screen display).
- Board with markers.

For trainings with practical tasks conduction partner can use its own equipment or IW Academy Virtual Lab Hardware. Requirements to the used equipment are presented in the sections below.

Lab Hardware

In this section, you will find a list of equipment that should be used in courses with practical exercises for the training group of 6 people. Partner that won't use Infinet Wireless Virtual Lab Hardware and want to use own for conducting trainings in accordance with Infinet Wireless training program should have listed below equipment. Training practical part implies that each trainee must configure at least one device.

Equipment

Part Number	Description	Q-ty	Note
R5000-Omx/ 5.300.2x500	H08 hardware platform	2	For practical exercises conduction on "InfiLINK 2x2 / InfiMAN 2x2 devices configuration" modules use of only R5000-Omx models is acceptable in case R5000-Lmn is not available
R5000-Lmn/ 5.300.2x300	H11 hardware platform	4	For practical exercises conduction on "InfiLINK 2x2 / InfiMAN 2x2 devices configuration" modules use of only R5000-Lmn models is acceptable in case R5000-Omx is not available
Um/5.500.2x500	H12 hardware platform	6	-
Q5-E	H1855 hardware platform	6	-
IDU-BS-G with power cords	Power supply	6	Another Infinet power supply acceptable that can power appropriate device model*

* In order to identify acceptable power supply please review compliance matrix at the document "[Powering Infinet Wireless Units](#)".

Accessories

Part Number	Description	Q-ty	Note
BW-S30W2+	Coaxial precision fixed attenuator, 30 dB	12/6	Use of attenuators with another values is acceptable: must be 70 dB for a radio link
ZX10-2-622-S+	Power Splitter/Combiner	8	
NM-SF50+	Coaxial adapter, N-male to SMA-female	12	
SMA (male)-SMA (male)	RF-cable	18	
	Managed Switch	2	Any model that supports LACP, VLAN can be used
InfiMUX6G	Infinet Switch	2	
	Power Strip	2	
	Ethernet cable	20	



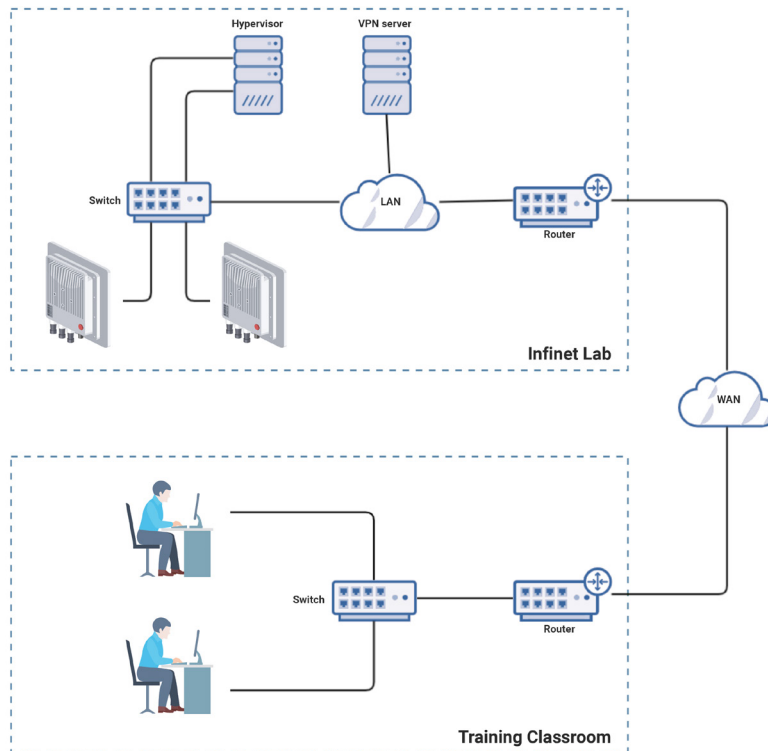
NOTE

In this list such items as Power Supply, Coaxial precision fixed attenuators, Coaxial adapters, RF-cables, Ethernet cables are reused for different practical exercises implementation.

IW Academy Virtual Lab Hardware

In case of using IW Academy Virtual Lab Hardware for practical exercises, the principle of remote connection to the Infinet equipment is used. Terminal server with a set of isolated virtual machines is allocated in the Infinet Lab. The laboratory local network joins the terminal server and Infinet devices. Each trainee connects to the virtual machine performs Infinet devices configuration in accordance with the appropriate practical task of the training module.

Scheme connection at the physical level is below.



NOTE

The scheme connection shows a solution for two trainees, but it can be easily scaled for more participants.

At the site of the Training Classroom, the equipment listed in the table below must be used.

Description	Q-ty	Note
Router	1	Any model that met below requirements
Switch (optional)	1	Any model

Router Requirements

- Access to Internet.
- Support PPTP and L2TP tunneling technologies as a Client.
- Support NAT.
- Able physically connect 6 trainees (if Switch is not used).

Model MikroTik RB2011UiAS-IN is recommended, or with WiFi support: MikroTik RB2011UiAS-2HnD-IN.



NOTE

Detailed IW Academy Virtual Lab Hardware principle of work, scheme connection at the logical level and requirements to its configuration are described at the document "IW Academy Virtual Lab Hardware Procedure". This document is available after getting Authorized Training Center Status.